



PLASTER, 20/30 SAND FINISH, TYP. BISQUE



PLASTER KHAKI



PLASTER STONE



TRIM EGGSHELL



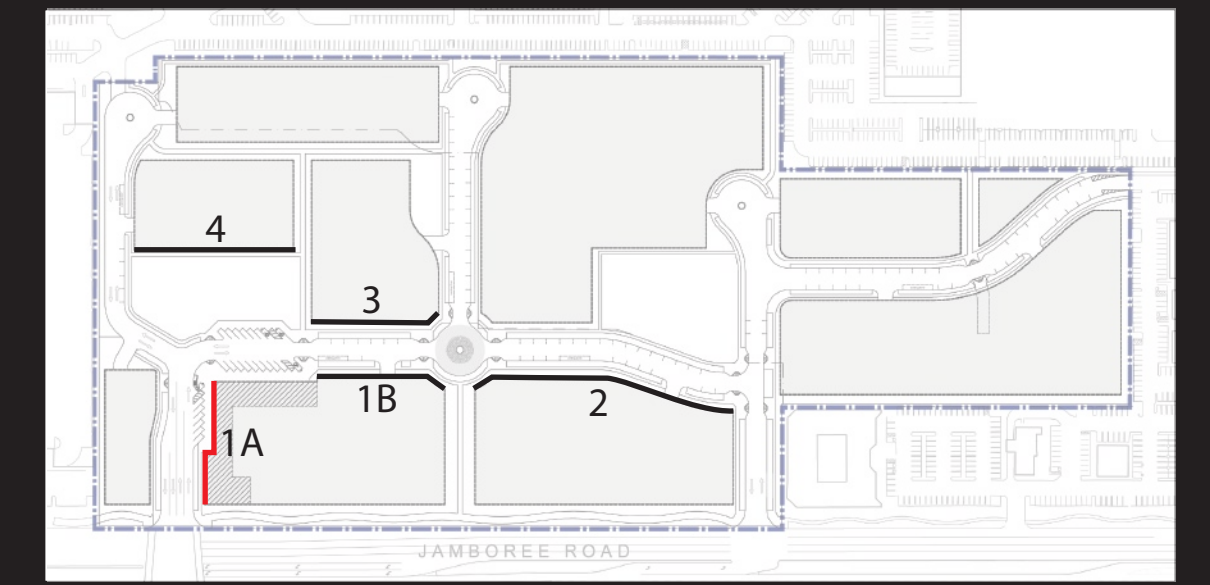
TRIM MEDIUM GRAY



TRIM/AWNING GOLD



AWNING RUST



KEY MAP



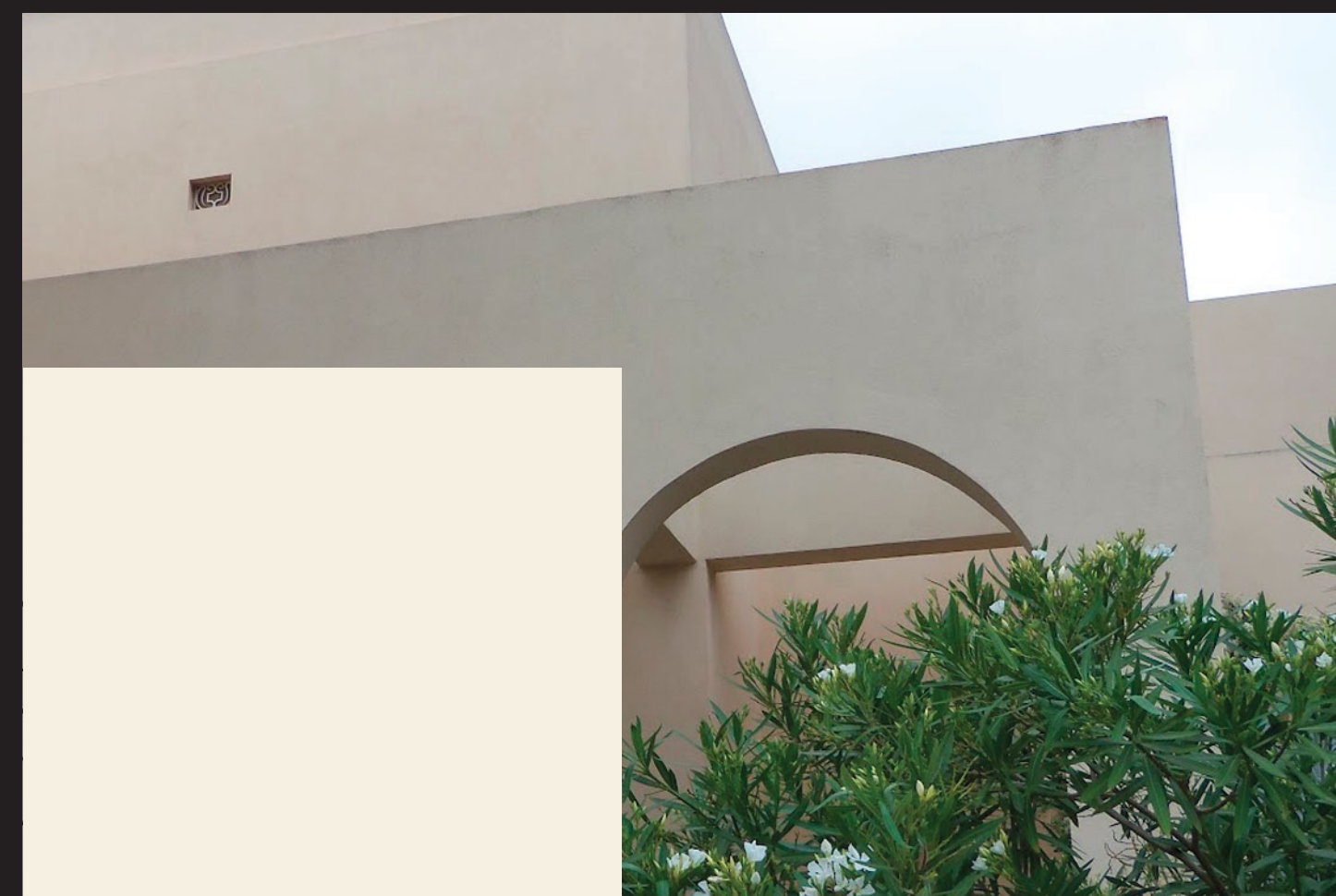
ENHANCED MATERIAL AREAS

### COLOR/MATERIAL SCHEME 1A



ENHANCED MATERIAL OPTION 1

LIMESTONE PLASTER NATURAL



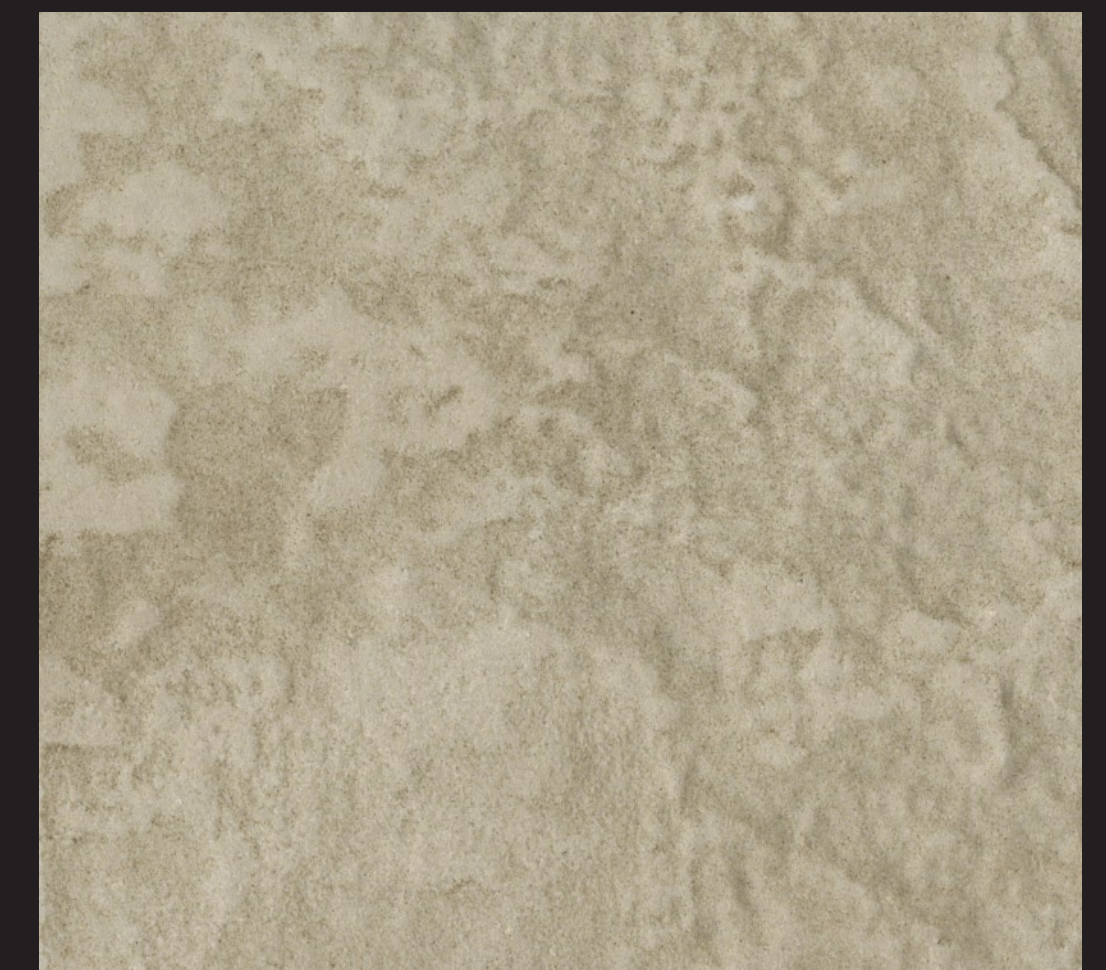
ENHANCED MATERIAL OPTION 2

SMOOTH PLASTER WARM WHITE



ENHANCED MATERIAL OPTION 3

MANUFACTURED STONE VENEER LIMESTONE



ENHANCED MATERIAL OPTION 4

TEXTURED CERAMIC TILE SAND

# MATERIALS AND COLORS

## Uptown Newport

Uptown Newport LP

The colors and materials depicted for each scheme reflect the intended quality and palette recommended for each style. Final selections shall substantially conform to this intent.

DATE: 07-22-2013 PROJECT: 2011-10101





PLASTER, 20/30 SAND FINISH, TYP. LIGHT CREAM



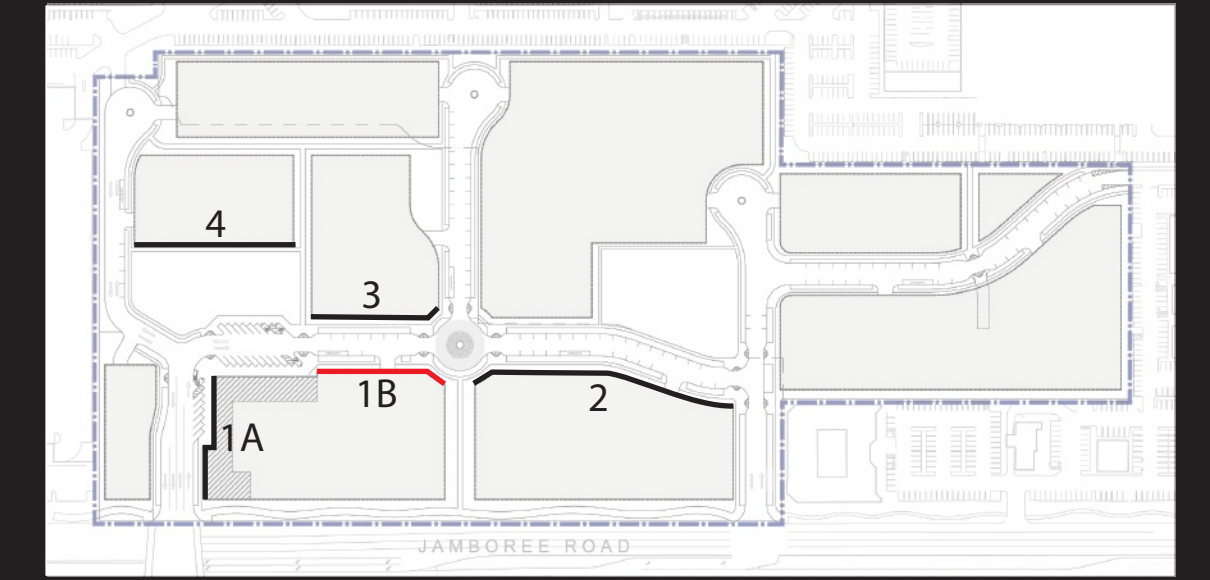
PLASTER PALE YELLOW



PLASTER GOLDEN



TRIM/AWNING LIGHT BRONZE



KEY MAP



ENHANCED MATERIAL AREAS

### COLOR/MATERIAL SCHEME 1B



ENHANCED MATERIAL OPTION 1

BRICK VENEER RED EARTH



ENHANCED MATERIAL OPTION 2

GLAZED BRICK VENEER CREAM



ENHANCED MATERIAL OPTION 3



TERRA COTTA PANEL SAND

# MATERIALS AND COLORS

## Uptown Newport

Uptown Newport LP

The colors and materials depicted for each scheme reflect the intended quality and palette recommended for each style. Final selections shall substantially conform to this intent.

DATE: 07-22-2013 PROJECT: 2011-10101





PLASTER, 20/30 SAND FINISH, TYP. WHITE



PLASTER LIGHT GRAY



PLASTER CARBON



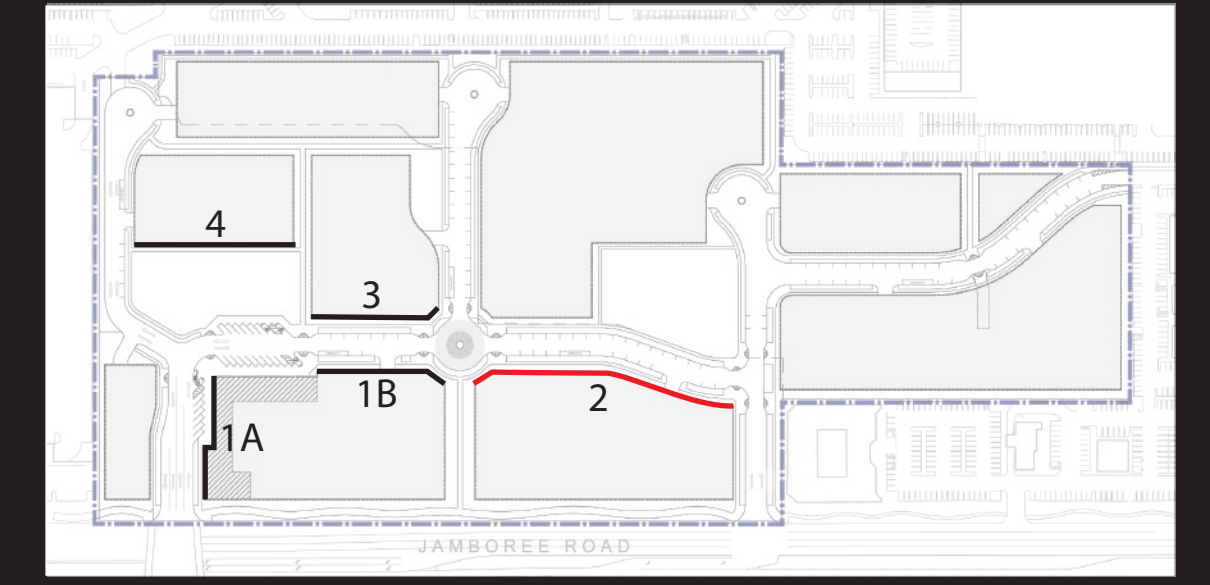
PLASTER MUSHROOM



TRIM/BALCONY GRAY



AWNING BURNT ORANGE



KEY MAP



ENHANCED MATERIAL AREAS

### COLOR/MATERIAL SCHEME 2



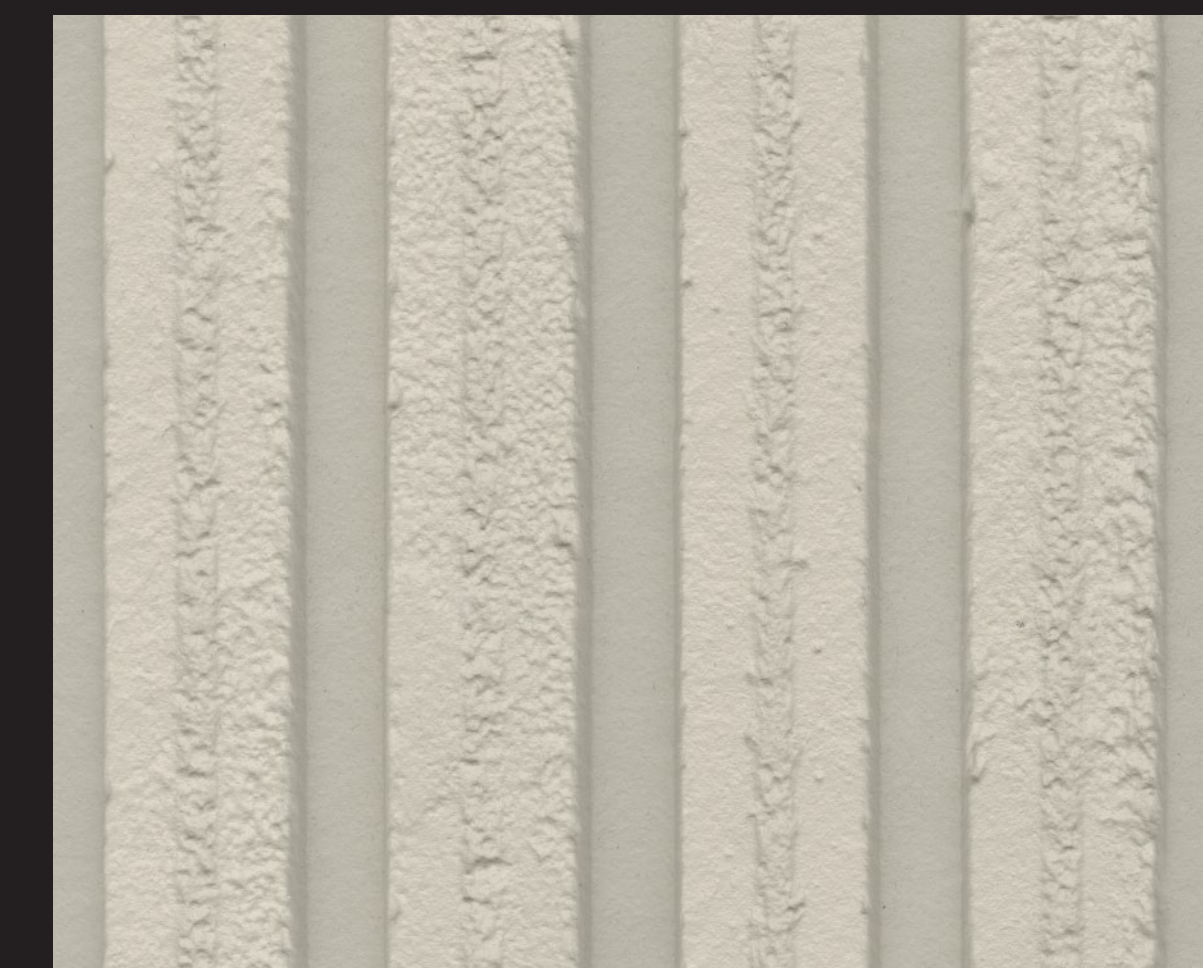
ENHANCED MATERIAL OPTION 1

SCORED CONCRETE VENEER WARM GRAY



ENHANCED MATERIAL OPTION 2

MANUFACTURED STONE, CHISELED WARM GRAY



ENHANCED MATERIAL OPTION 3

FIBER CEMENT PANEL WARM GRAY

# MATERIALS AND COLORS

## Uptown Newport

Uptown Newport LP

The colors and materials depicted for each scheme reflect the intended quality and palette recommended for each style. Final selections shall substantially conform to this intent.

DATE: 07-22-2013 PROJECT: 2011-10101





PLASTER, 20/30 SAND FINISH, TYP. WARM WHITE



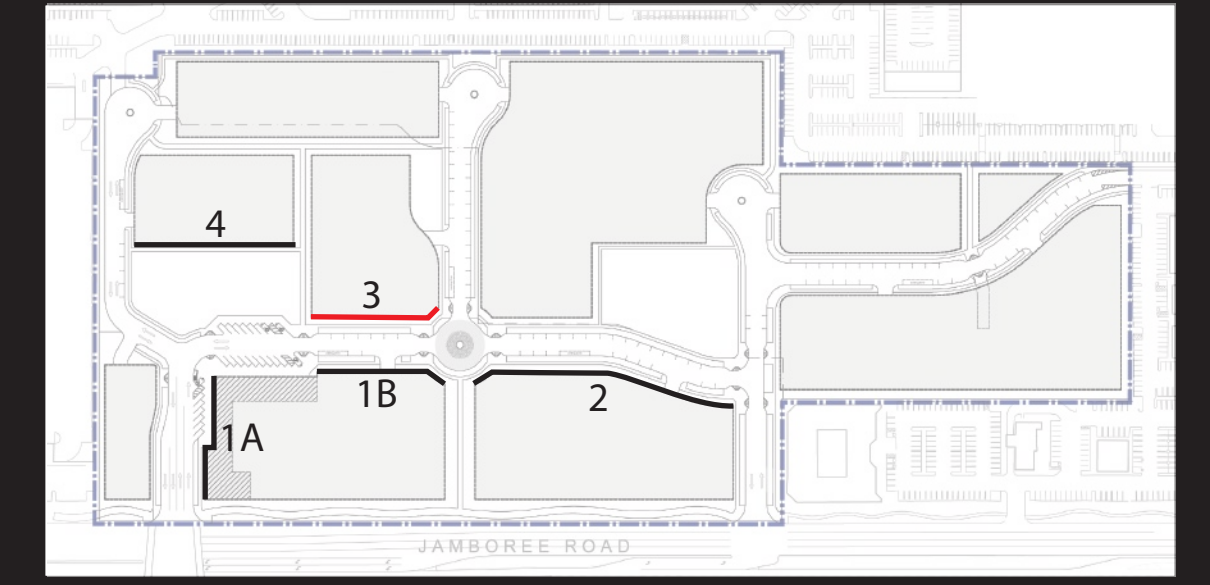
PLASTER RED CLAY



TRIM/AWNING GRAY



AWNING RED CLAY



KEY MAP

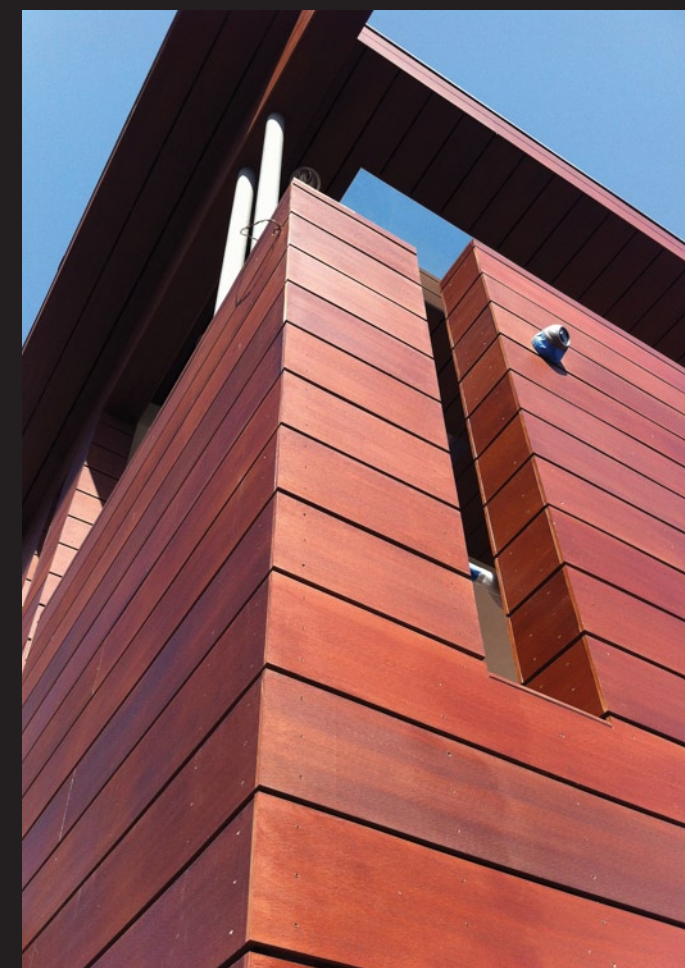


ENHANCED MATERIAL AREAS

### COLOR/MATERIAL SCHEME 3



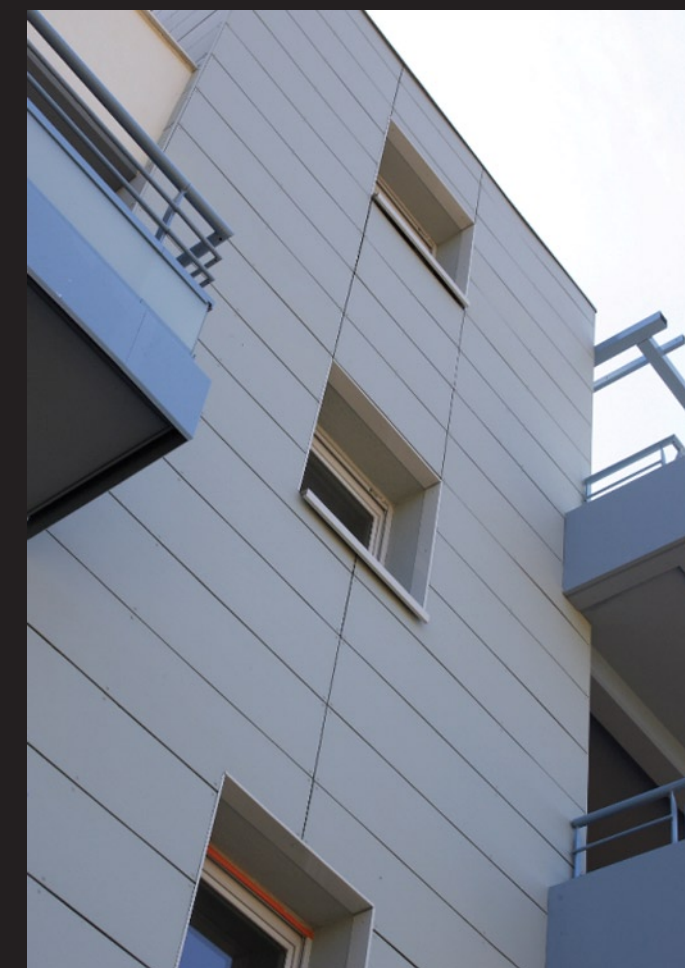
ENHANCED MATERIAL OPTION 1



COMPOSITE WOOD PANEL WARM RED



ENHANCED MATERIAL OPTION 2



FIBER CEMENT PANEL RED



ENHANCED MATERIAL OPTION 3

CERAMIC TILE TEXTURED GRAY

# MATERIALS AND COLORS

## Uptown Newport

Uptown Newport LP

The colors and materials depicted for each scheme reflect the intended quality and palette recommended for each style. Final selections shall substantially conform to this intent.

DATE: 07-22-2013 PROJECT: 2011-10101





PLASTER, 20/30 SAND FINISH, TYP. BONE



PLASTER LIGHT YELLOW



PLASTER PUMICE



TRIM PUMICE



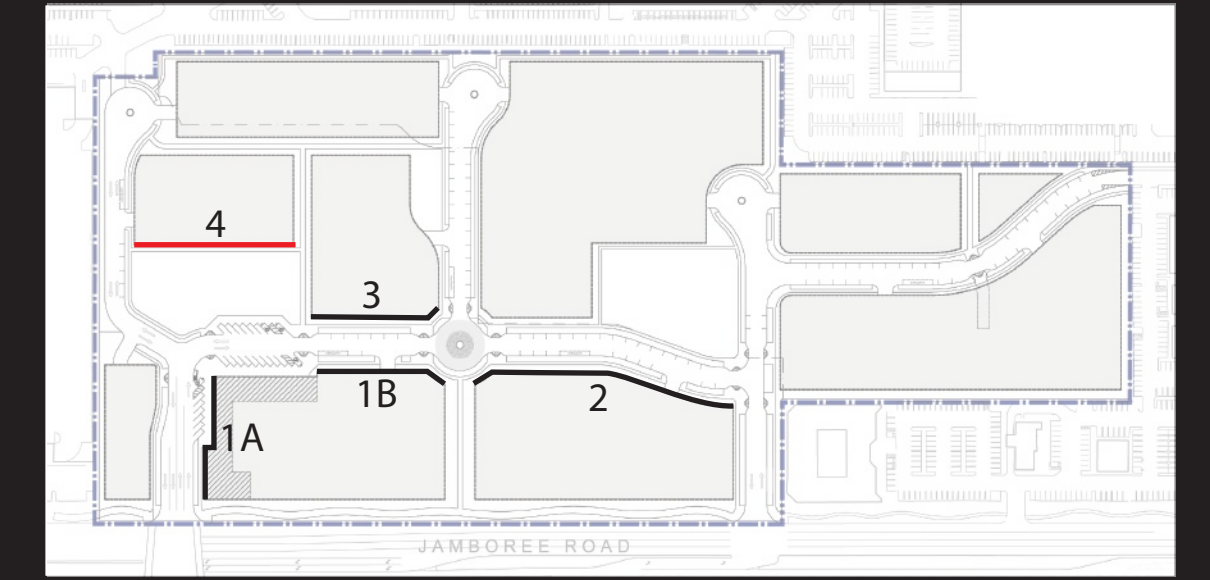
AWNING BURNT RED



ROOF OPTION 1  
FLAT CONCRETE TILE, WARM SLATE



ROOF OPTION 2  
METAL PANEL, WARM GRAY

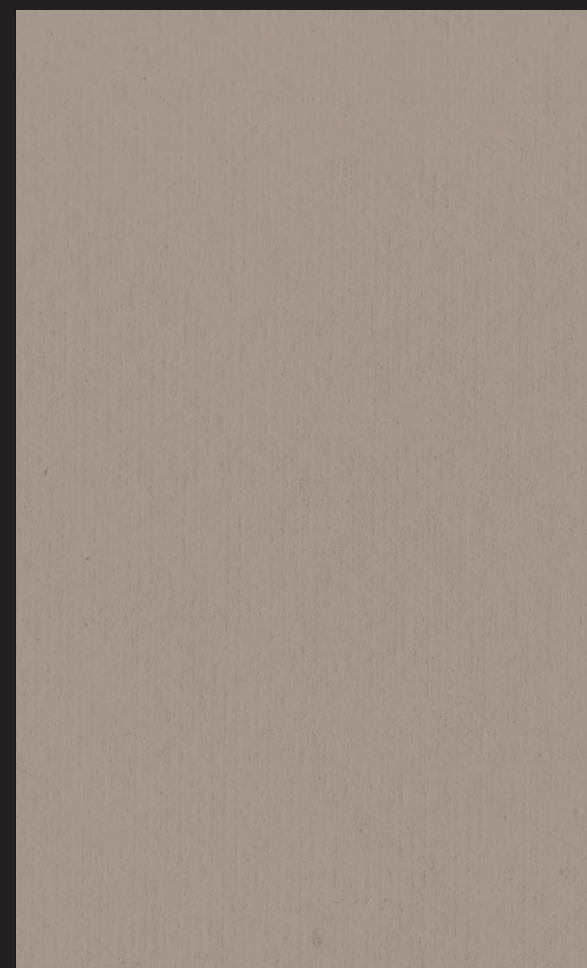


KEY MAP



ENHANCED MATERIAL AREAS

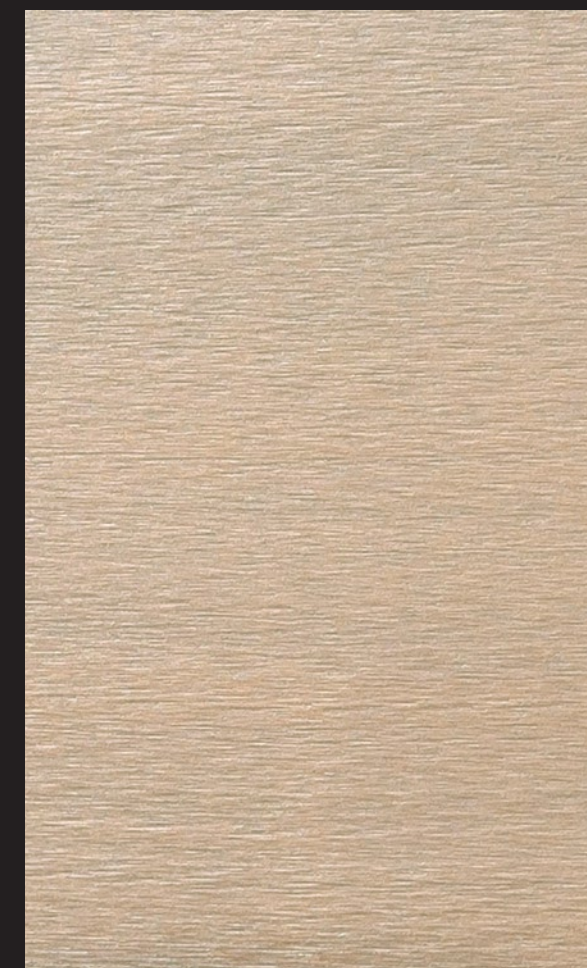
### COLOR/MATERIAL SCHEME 4



ENHANCED MATERIAL OPTION 1



FIBER CEMENT PANEL MUSHROOM



ENHANCED MATERIAL OPTION 2



COMPOSITE WOOD PANEL NATURAL



ENHANCED MATERIAL OPTION 3

BRICK VENEER SANDSTONE

# MATERIALS AND COLORS

## Uptown Newport

Uptown Newport LP

The colors and materials depicted for each scheme reflect the intended quality and palette recommended for each style. Final selections shall substantially conform to this intent.

DATE: 07-22-2013 PROJECT: 2011-10101

